



PROGRAMS IN MEMORY OF

Joseph H. Levine

Policies

Covid-19 Information

Proof of vaccination required to attend in-person classes.

Vaccination is required for all Gems staff and instructors. In-Person courses may change to Zoom if the Covid-19 situation changes. **Masks are required.**

Cancellation

When appropriate, Golden Slipper Gems will issue a credit, not a refund. If a class is canceled due to weather or emergency, a make-up class will be offered via Zoom.

Guests

For out-of-town guests you can purchase a class for \$10. Guest passes cannot be purchased in lieu of registration.

Credit

Credit will not be given after the first day of classes except in the event of illness or injury. Written documentation from a physician is required.

Class Location

Adath Israel
250 N. Highland Avenue
Merion Station, PA

Program Sponsor Berkowitz Family Fund



GOLDEN SLIPPER

Gems

Executive Director

Moriah SimonHazani

MSimonHazani@goldenslipper.org

610-359-8632

Register on our website at
[www.GoldenSlipperGems.org!](http://www.GoldenSlipperGems.org)

Enrichment
for Older Adults

GoldenSlipperGems.org
LIKE us on Facebook



FALL PROGRAM

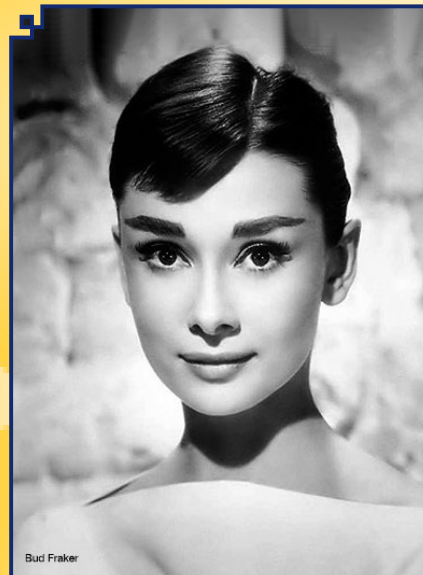
2021



GOLDEN SLIPPER

Gems

On the Main Line



Bud Fraker



Jack Mitchell

Both In-Person and
Zoom Courses!

Enrichment
for Older Adults

GoldenSlipperGems.org
LIKE us on Facebook



Welcome to Golden Slipper Gems

FALL PROGRAM 2021

MONDAYS



6 WEEKS | OCTOBER 4 – NOVEMBER 8

Speakers Bureau

▶ 10-11AM | COURSE FEE \$53

Each week we bring you an exceptional variety of topics and speakers. Our line-up of guests includes (in order of appearance): **Jerry Silverman**, certified member of the Association of Philadelphia Tour Guides and founding member of the Museum of American Jewish History, *Philadelphia's Jewish Quarter 1850-1950*; **Nikki Johnson-Huston**, Tax Attorney, *From Homeless to Lawyer to Ms. Universe*; **Nan Feyler**, Executive Director of the Pennsylvania Innocence Project, *The Work of the Innocence Project*; **Buntzie Churchill**, Past President of the World Affairs Council of Philadelphia, *Churchill and the Jews*; **Jim Murphy**, writer and certified Philadelphia tour guide, *The Amazing Success of William Penn*; **Jonna McDougal**, Teacher and Scholar, *Natural Enemies? Demystifying the Conflict between Science and Religion*.



MONDAYS



6 WEEKS | OCTOBER 4 – NOVEMBER 8

Great Jewish Documentaries

▶ 11:15-12:15PM | COURSE FEE \$53

Instructor: Irv Slifkin, Writer and Professor of Journalism at Temple University

This series features six documentaries that take a look at the diverse ways Jewish culture has influenced people and the world around them. All of these films are surprising, filled with revelations that entertain, reveal, and are thought-provoking. Movies presented are: *Herb Alpert Is...; Sammy Davis, Jr.: I've Got to Be Me; Yoo-Hoo, Mrs. Goldberg; Famous Nathan; The Life and Times of Hank Greenberg; My Architect: A Son's Journey*.



TUESDAYS



6 WEEKS | OCTOBER 5 – NOVEMBER 9

Eyes on China

▶ 10-11AM | COURSE FEE \$53

Instructor: Yingru Zhao, Instructor at the Center for Chinese Language and Instruction at Temple University

China is a super modern, global society that has deep roots. Through a series of sessions, we will discover how its cultural heritage shapes its contemporary global cities by looking at different aspects of today's society. Topics covered include an exploration of unique metropolises and Chinese cultural heritage under the glow of Chinese language and philosophy; fusion cuisine of Chinese food and its correlation with northeast Asian and international recipes; traditional Chinese festivals, folk cultures, and innovative celebrations of modern festivals that influence the daily life of contemporary Chinese people.



TUESDAYS



5 WEEKS | OCTOBER 12 – NOVEMBER 9

Legendary Actresses of the Stage and Screen

▶ 11:15-12:15pm | COURSE FEE \$45

Instructor: Leila Joffe, MFA, American Conservatory Theater, Member AFTRA, Screen Actors Guild and Actors Equity

In this course, we will explore great actresses that have left a lasting legacy. Meryl Streep, Judy Dench, Katherine Hepburn, Maggie Smith, and Audrey Hepburn brought their own unique talents and light to the silver screen. Through clips and lectures, we will learn about their greatest films and their lives.



Continued ...

FALL PROGRAMS CONTINUED



WEDNESDAYS



5 WEEKS | OCTOBER 6 – NOVEMBER 3

History Face to Face

▶ 10-11AM | COURSE FEE \$45

Instructor: Jaan Troltenier, Art Historian and Former Latin Instructor



Immerse yourself in another age as costumed history interpreter Jaan Troltenier enacts three denizens of the past through story, songs, accents, and images. Come meet: Elizabeth Walker, a loyal subject of Her Majesty's Grace, Elizabeth I; Berthe Morisot, Impressionist painter; Rosie Ginzburg, a Jewish immigrant to America from Eastern Europe. One of these three actually existed, the other two are fictional, but all three will delight and educate you with their stories and pictures. Each is brought to life through extensive research. Most classes include period music and singing, and your participation is encouraged.

WEDNESDAYS



6 WEEKS | OCTOBER 6 – NOVEMBER 10

A People at War: Being Jewish in America during the Civil War

▶ 11:15-12:15PM | COURSE FEE \$53

Instructor: Herb Kaufman, Adjunct Professor, Manor College, Editorial Staff, The Civil War News



This course will describe how the Jewish communities in the North and the South reacted to the Civil war. When the war began, Jews in both the North and the South rushed to support their beliefs, and Jewish soldiers served with gallantry in both Union and Confederate armies. It will also bring to light President Lincoln's relationship with the Jewish community, including a discussion of how religious leaders expressed their views of the war.

THURSDAYS



(Zoom option)

6 WEEKS | OCTOBER 7 – NOVEMBER 11

It's All in the Family: Family Ties in Biblical Narrative

▶ 10-11AM | COURSE FEE \$53

Instructor: Dr. Emilie S. Passow, Retired Professor of English Literature and Medical Humanities



Paradigms of human relationships, human vulnerabilities, as well as capacities for transcendence, biblical figures endlessly fascinate. This course examines the images of family relationships apparent in Biblical narrative. Like contemporary relationships, some are motivated by love and devotion, while others are generated by power, jealousy or self-interest. What do these patterns suggest about Biblical perceptions of human nature? Of family obligations and gender roles? Of covenantal relationships that prepare us for a relationship with God? What do they offer to the contemporary reader? Source material includes the Biblical text, as well as classical and contemporary commentaries.



THURSDAYS



(Zoom option)

5 WEEKS | OCTOBER 7 – NOVEMBER 4

Political Affairs

▶ 11:15-12:15PM | COURSE FEE \$45

Instructors: Adam DePaul, Tribal Council Member of the Lenape Nation of Pennsylvania; **Dr. Matt Kerbel**, Department of Political Science at Villanova University; **Dr. Vance Kincade**, Adjunct Instructor at Rowan University; **Ira Cooperman**, Political Analyst; **Steve Cohen**, Current Events Facilitator, Retired Public Affairs Director.



Join us as our esteemed speakers discuss political current national and international topics in the news.